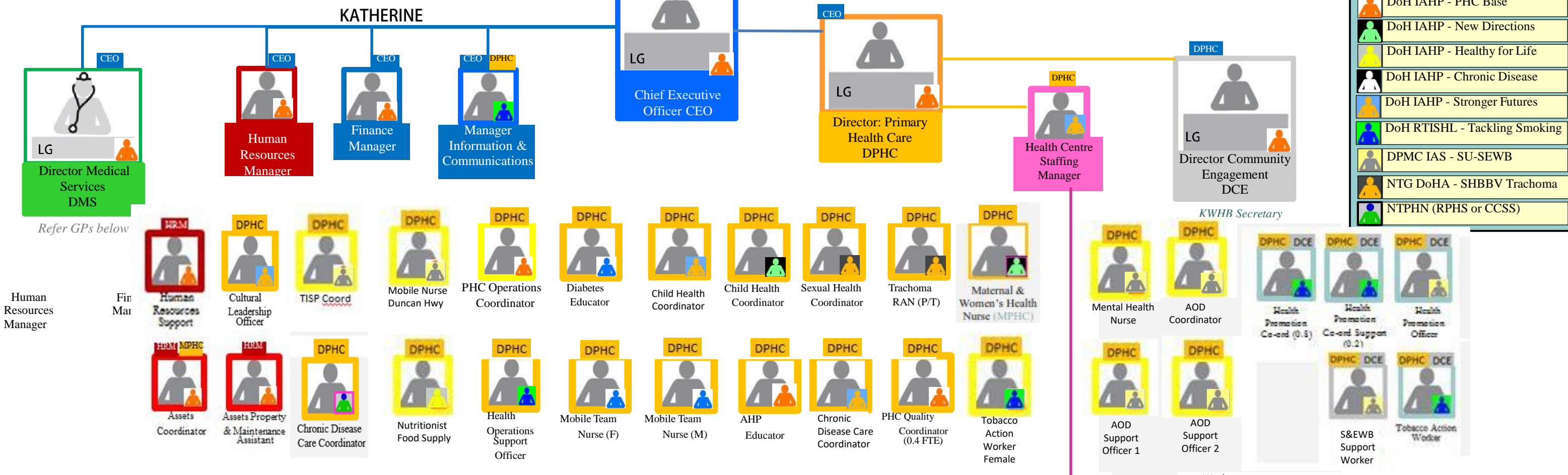


- Specialist
- Bulla
- Daguragu
- Gilwi
- Kalkaringi
- Kalkaringi
- Lajamanu
- Lajamanu
- Lajamanu
- Lajamanu
- Lajamanu
- Mialuni
- Myatt
- Nitjpirru
- Yarralin
- Yarralin

KATHERINE WEST HEALTH BOARD ORGANISATIONAL CHART – August 2018



KALKARINDJI & PIGEON HOLE

GP Kalkarindji	Health Centre Coordinator	Aboriginal Health Practitioner
Remote Area Nurse	Remote Area Nurse	Remote Area Nurse (0.4) Kalkarindji
Remote Area Nurse (0.6) Pigeon Hole	Male Cleaner (0.5)	Female Cleaner (0.5)
Driver (0.5)	Remote Admin Officer	

Pigeon Hole Health Centre is covered by visiting staff from Kalkarindji Health Centre, who fly in and work in the community each Tues-Thurs. Emergencies in Pigeon Hole are answered by Kalkarindji.

LAJAMANU

GP Lajamanu	GP / CD Lajamanu 0.5	Health Centre Coordinator	Remote Area Nurse	Remote Area Nurse
Remote Area Nurse	Remote Area Nurse	Remote Area Nurse	Male Yapa Outreach Worker (0.5)	Female Yapa Outreach Worker
Remote Admin Officer (0.5)	Remote Admin Officer (0.5)	Driver / Cleaner (0.5)	Cleaner (0.5)	

TIMBER CREEK / BULLA / MIALUNI

GP Timber Creek & Yarralin	Health Centre Coordinator	Remote Area Nurse	Remote Area Nurse
Remote Area Nurse	Aboriginal Health Pract. Bulla	Remote Admin Officer (0.5)	Cleaner (0.5) Bulla
Aboriginal Health Pract. Bulla	Aboriginal Health Pract. Bulla - Vacant	Cleaner (0.5) Bulla	

Mialuni Health Centre is covered by visiting staff from Timber Creek Health Centre one day each week.

YARRALIN

GP Timber Creek & Yarralin	Health Centre Coordinator	Remote Area Nurse
Aboriginal Health Pract.	Chronic Disease Care Coordinator	Remote Admin Officer (0.5)
Cleaner (0.5)		